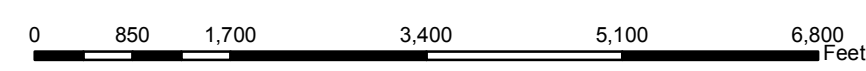
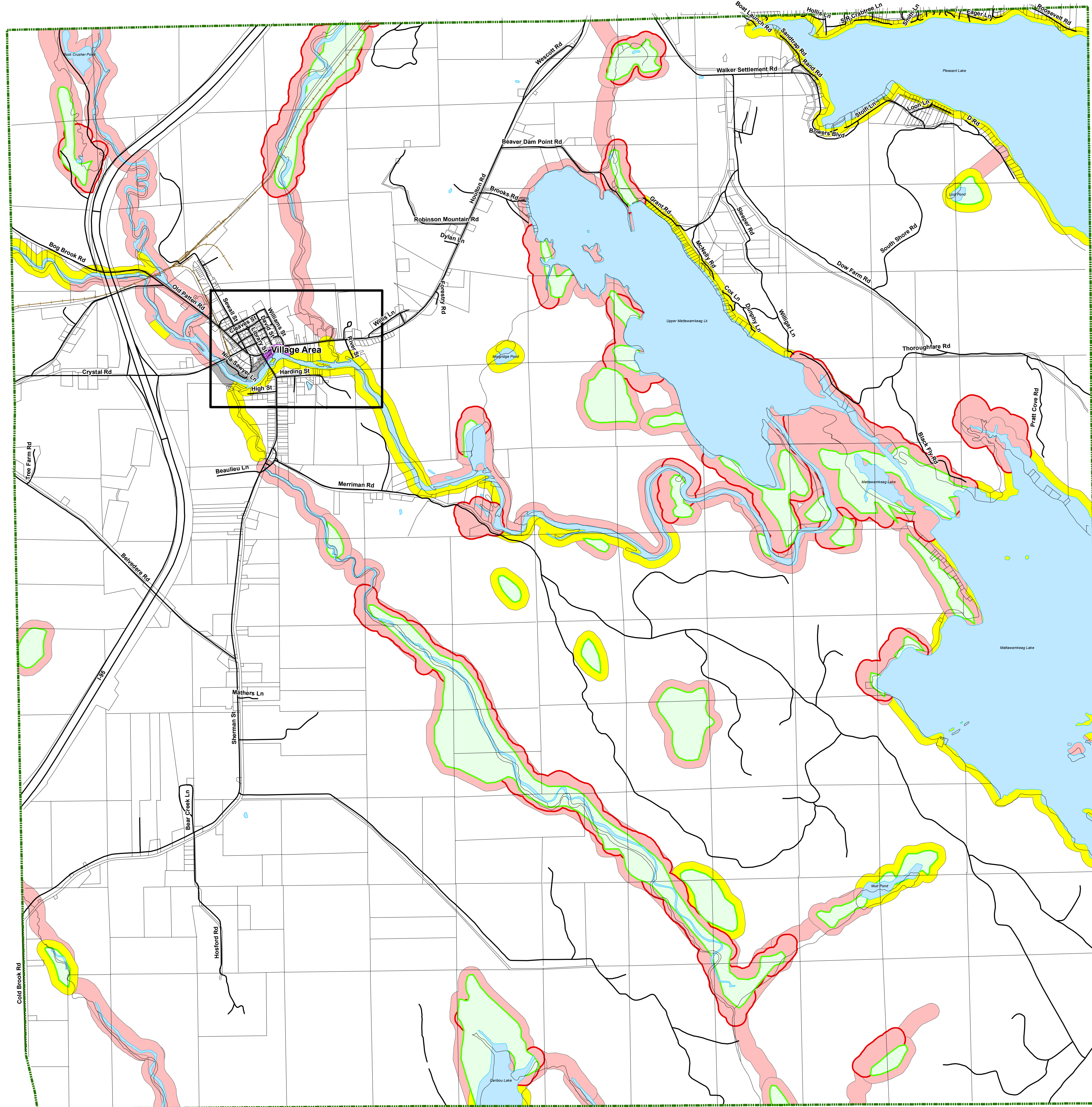


1 inch = 1,666.67 feet



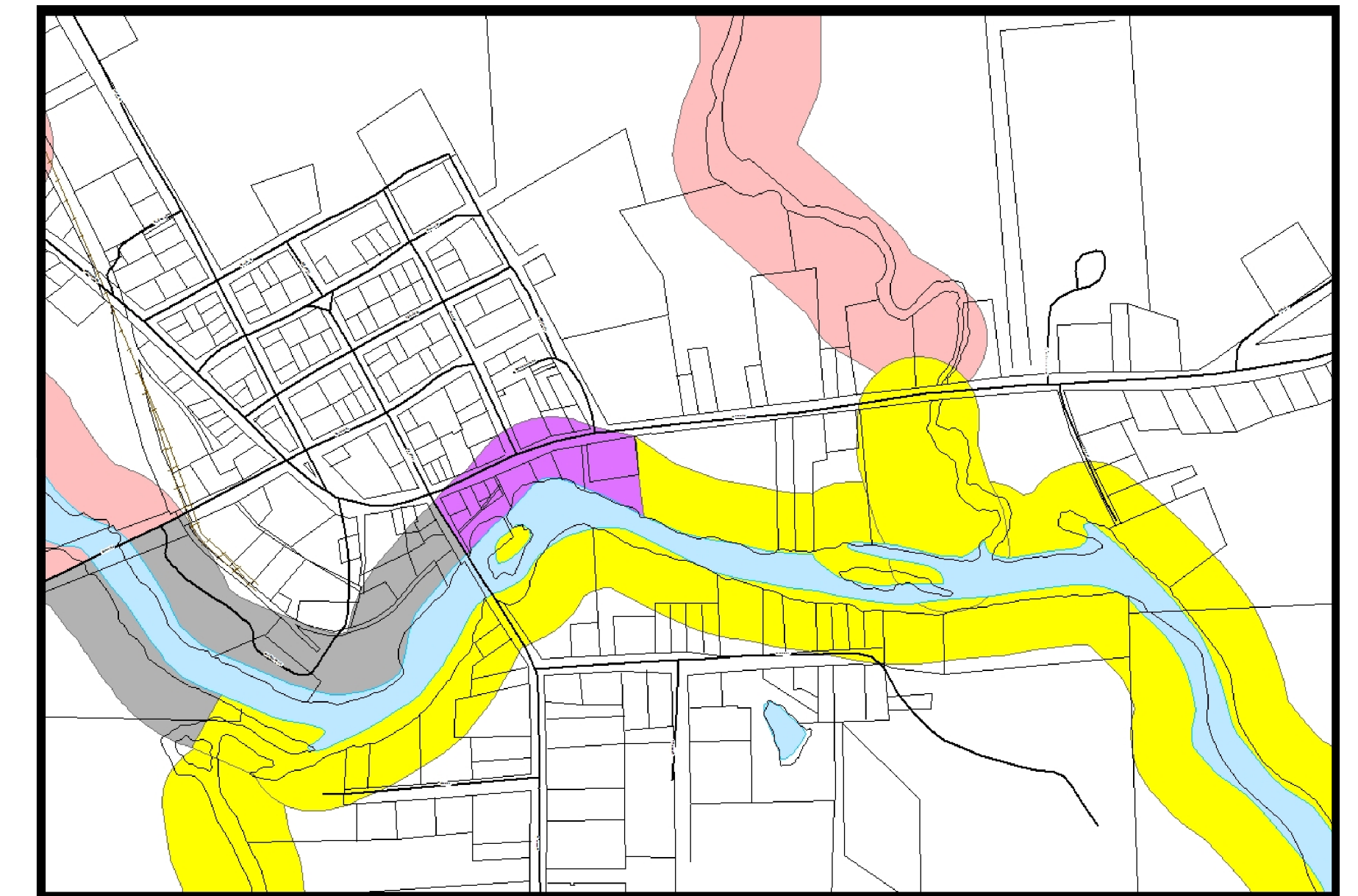
Legend

- Township Boundaries
 - Village Area
 - Roads
 - Railroad
 - Lotlines
- Rivers, Lakes and Ponds**
- Island
 - Lakes and Ponds
 - River
 - Nonforested Wetlands
 - Shorezone IWWH Resource Protection District
- Shoreland Zoning**
- 250' General Development District
 - 250' Limited Commercial District
 - 250' Resource Protection District
 - 250' Limited Residential District

MAP NOTES:

1. THIS MAP IS INTENDED FOR PLANNING PURPOSES ONLY AND SHOULD NOT BE USED FOR CONVEYANCES.
2. THE DEPICTION OF THE BOUNDARIES OF THE ZONES ON THIS OFFICIAL SHORELAND ZONING MAP IS FOR ILLUSTRATIVE PURPOSES ONLY. FOR PURPOSES OF ADMINISTRATION AND ENFORCEMENT OF THE SHORELAND ZONING ORDINANCE, THE EXACT BOUNDARIES OF THE ZONE SHALL BE DETERMINED BY ON-SITE INSPECTION AND MEASUREMENT FROM THE NORMAL HIGH WATER LINE OR UPLAND EDGE OF A WETLAND.
3. THIS MAP IS BASED ON THE USGS 7.5' QUADRANGLE PROVISIONAL MAP WITH ADDITIONAL INFORMATION DERIVED FROM THE ORTHO 2F DATA AS ACCESSED FROM THE MAINE OFFICE OF GIS DATA CATALOG WEBSITE. (<http://megis.maine.gov/catalog/>).

Town Clerk _____ Date _____



Village Area

Island Falls, Maine
Shoreland Zoning

Date: 04/25/13

